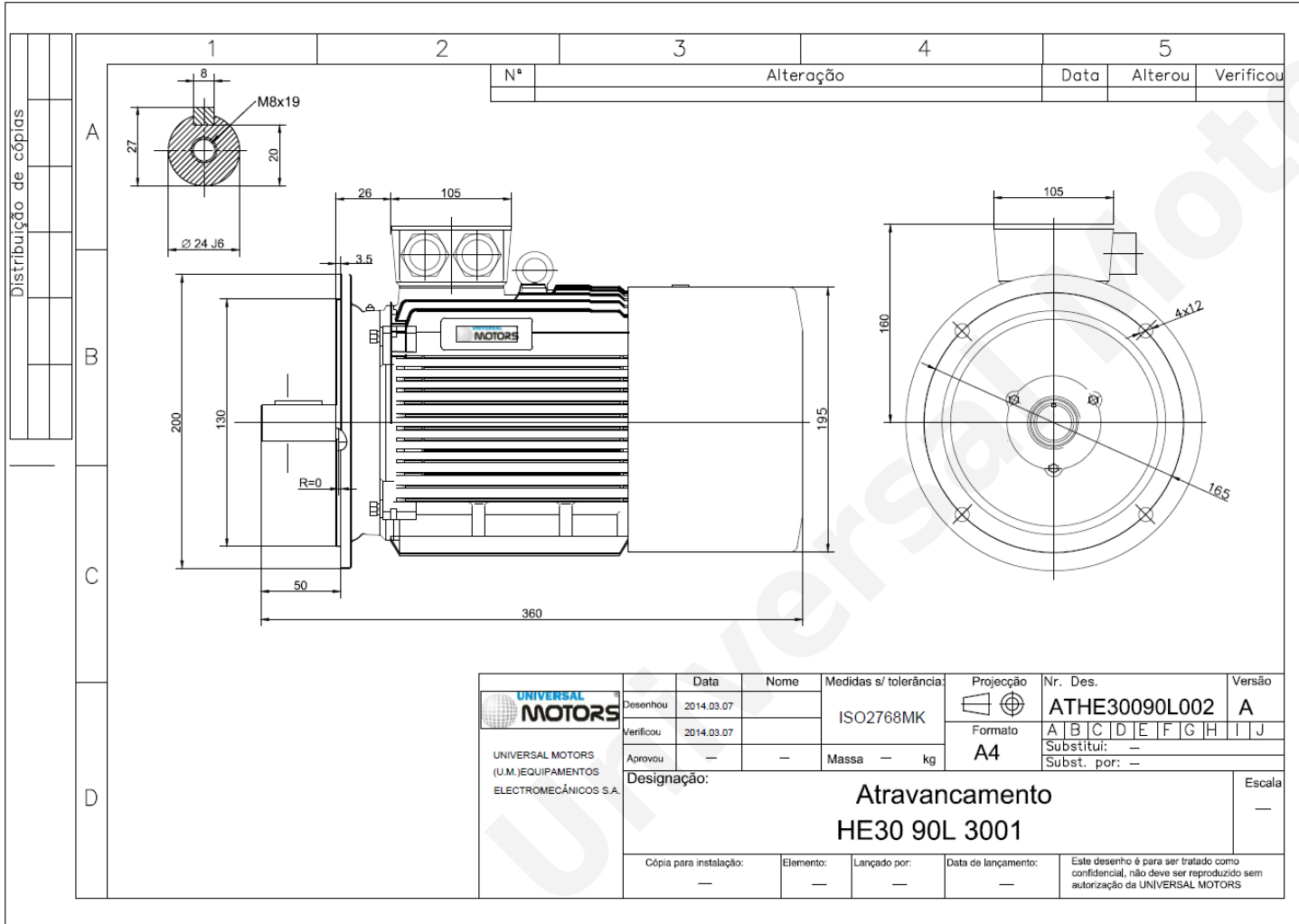




TECHNICAL DATA

Three Phase Electric Motors - Cast Iron Frame
 HE30 90 L1 2 IE2
 2.2 kW / 3 Cv
 2880 RPM



| | |
|-----------------------------|-------------------------|
| Motor type: | HE30 90 L1 2 IE2 |
| Output: | 2.2 kW / 3 Cv |
| Speed (min ⁻¹): | 2880 RPM |
| Frequency: | 50 Hz |
| Voltage: | 400 V |
| Current: | 4.5 A |
| Power factor (Cos Ø): | 0.85 |
| Poles: | 2 |
| Insulation class: | F |
| Temperature rise Class: | B |
| Efficiency 50%: | 82.5 % |
| Efficiency 75%: | 84.0 % |
| Efficiency 100%: | 83.2 % |
| Torque: | 7.3 N.m |
| Tstarting/Tnominal: | 2.3 |
| Istarting/Inominal: | 7.8 |
| Tmaximum/Tnominal: | 2.3 |
| Noise: | 61 Db(A) |
| Weight: | 30 Kg |
| Bearing DE: | 6205 2Z C3 |
| Bearing NDE: | 6205 2Z C3 |

Regime - S1

Altitude - 1000m

Environment Temperature - 40°C

CONTACTS:

UNIVERSAL MOTORS Tel: +351 252 299 080
 Rua de São Brás,745 Fax: +351 252 299 089
 4480-782 VILA DO CONDE Mail: geral@universalmotors.pt

* References applied only in the UK